



# Central University of Punjab

Bathinda

Established vide Act No. 25 (2009) of Parliament

## ANNUAL REPORT 2008-09; 2009-10



*The City Campus as on 8<sup>th</sup> July 2009*



**The Main Entrance**



# Central University of Punjab

Bathinda

Established vide Act No. 25 (2009) of Parliament

## ANNUAL REPORT

### Contents

2008-09

|               |   |
|---------------|---|
| Annual Report | 2 |
|---------------|---|

2009-10

|   |    |  |    |
|---|----|--|----|
| 1. From the Vice Chancellor's desk                              | 3  | 10.7 Guest house   | 23 |
| 2. Executive summary  | 5  | 10.8 Transit accommodation                                 | 23 |
| 3. Establishment of the<br>Central University of Punjab         | 5  | 10.9 Student Hostels                                       | 23 |
| 3.1 Objectives of the University                                | 5  | 10.10 Health centre  | 23 |
| 3.2 Mission of the University                                   | 6  | 10.11 Biometrical system for staff attendance              | 23 |
| 3.3 Vision of the University                                    | 6  | 11. Academic programmes                                    | 24 |
| 4. The University Logo  | 6  | 11.1 Semester system                                       | 25 |
| 5. Location of the University                                   | 7  | 11.2 Incentives to students                                | 25 |
| 6. The Campuses of the University                               | 7  | 12. Academic activities                                    | 25 |
| 7. Statutory Bodies of the University                           | 10 | 12.1 Indo-German Workshop                                  | 25 |
| 7.1 Executive Council   | 10 | 12.2 Collaboration for research and<br>exchange programmes | 26 |
| 7.2 Academic Council  | 12 | 12.3 Foundation day celebrations                           | 26 |
| 7.3 Finance Committee   | 13 | 12.4 Faculty publications                                  | 27 |
| 7.4 Planning Board  | 14 | 12.5 Membership of statutory bodies                        | 27 |
| 7.5 Building Advisory Committee                                 | 15 | 12.6 Conference/symposia/seminar<br>/workshop attended     | 29 |
| 8. Proposed Schools and Centres of Studies                      | 16 | 12.7 Conference/symposia/seminar<br>/workshop organised    | 29 |
| 8.1 Schools established during<br>2009-10 and the faculty       | 18 | 12.8 Book exhibition                                       | 29 |
| 9. Non-teaching staff of the University                         | 19 | 13. Other activities                                       | 30 |
| 10. Infrastructure  | 20 | 13.1 Tree plantation drive                                 | 30 |
| 10.1 The University library                                     | 20 | 13.2 Republic Day celebrations                             | 30 |
| 10.2 Research laboratories                                      | 21 | 13.3 Annual Day celebrations                               | 31 |
| 10.3 Lecture rooms and seminar hall                             | 21 | 13.4 Important visitors                                    | 31 |
| 10.4 Computer laboratory  | 22 | 14. Abstracts of the financial statement                   | 32 |
| 10.5 Solar-Wind Energy Hybrid System<br>and solar street lights | 22 |  |    |
| 10.6 Diesel generating sets                                     | 22 |  |    |



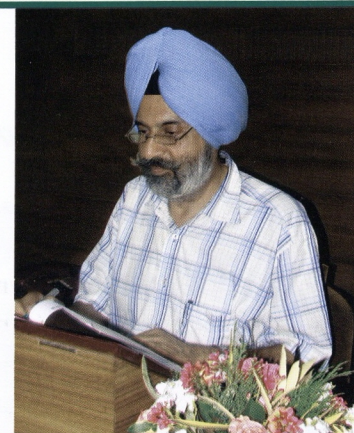
## Annual Report 2008-09

The Central University of Punjab was established at Bathinda under the Central Universities Act No. 25 (2009). Professor Dr. Jai Rup Singh was appointed its first Vice Chancellor. With the joining of Vice Chancellor on February 28, 2009 the university started functioning from his previous official residence of the Vice Chancellor at Guru Nanak Dev University, Amritsar. Later, D-13, Civil Station at Bathinda was provided by the State Government for his residence and for establishing the Camp Office of the university. Several old unused buildings like marriage palaces, shop-cum-offices, scattered rooms in some institutions, residential buildings, small institutions in dilapidated condition etc., suggested by the district administration on behalf of the Government of Punjab were considered but none of these was suitable for establishing the Transit Campus of the university.

Prof. Dr. Jai Rup Singh  
Vice Chancellor

### RECEIPTS & PAYMENTS FOR THE YEAR ENDING 31.03.2009

| RECEIPTS (RUPEES)                | CURRENT YEAR      | PAYMENTS (RUPEES)   | CURRENT YEAR       |
|----------------------------------|-------------------|---|--------------------|
| I. Opening balances              |                   | I. Opening balances                                       | 0                  |
| a) Cash in hand                  | 0                 | II. Expenses  |                    |
| b) Bank balances                 |                   | a) Establishment Expenses                                 | 8,000              |
| i. PNB Saving Account            | 0                 | b) Administrative Expenses                                | 46,042             |
| II. Grants received              |                   | III. Payments made against funds for various projects     | 0                  |
| a) From UGC                      | 1,50,00,000       | IV. Investments and deposits made                         |                    |
| III. Income on investments from  |                   | a) Out of Earmarked/Endowment Funds                       | 0                  |
| a) Earmarked/Endowment Funds     | 0                 | b) Out of own Funds (Investment - Others)                 | 0                  |
| b) Own Funds (Other investments) | 0                 | c) In Fixed Deposits                                      | 0                  |
| IV. Interest received            |                   | V. Expenditure on Fixed Assets & Capital Work-in-progress |                    |
| a) On Saving Account             | 14,078            | a) Purchase of Fixed Assets                               | 77,720             |
| V. Other income                  |                   | b) Advances   | 0                  |
| a) Tender Fee                    | 0                 | VI. Refund of surplus money/loans                         | 0                  |
| b) Public Aid                    | 0                 | a) To the Government of India                             |                    |
| c) Job/Admission Application Fee | 0                 | b) To the State Government                                |                    |
| VI. Amount borrowed              | 0                 | c) To other providers of funds                            |                    |
| VII. Any other receipts          |                   | VII. Finance charges                                      | 0                  |
| a) Security Deposit              | 0                 | VIII. Other payments                                      |                    |
|                                  |                   | a) Security Deposit                                       | 0                  |
|                                  |                   | IX. Closing balances                                      |                    |
|                                  |                   | a) Cash in hand   | 3,002              |
|                                  |                   | b) Bank balances  |                    |
|                                  |                   | c) PNB Saving Account                                     | 1,48,79,314        |
| <b>TOTAL</b>                     | <b>1,50,14,07</b> | <b>TOTAL</b>  | <b>1,50,14,078</b> |



## 1 *From the Vice Chancellor's Desk*

The Central University of Punjab established through the Central Universities Act No. 25 (2009) is an upcoming national institution created for offering world class education, research and training opportunities to the people of an educationally backward region of Punjab to enable them face the challenges of 21<sup>st</sup> century.

It is indeed a matter of great pleasure for me to roll out the Annual Report of the University for the year 2009-2010 that highlights achievements of the university in building its Transit Campus out of the ruins of a cluster of buildings, preparing for the main campus to come up on 500 acres of land, procuring equipment, recruiting faculty and hiring supporting staff to initiate the academic programmes and to run essential services.

The university is striving hard to create teaching and research facilities par excellence despite several problems at initial stages. The transformation of dilapidated premises of Bathinda Cooperative Integrated Cotton Ginning and Spinning Mills (BACOSPIN) in to the City Campus of the university was a colossal task. The first four months after acquisition of the premises were spent in clearing the premises of wild growth around the buildings and open spaces, repair and renovation of a part of the buildings to accommodate Vice Chancellor's office, computer laboratory, classrooms, faculty room, laboratories, a seminar hall and to arrange power and water supply connections. Within one year of establishment of the City Campus, appropriate infrastructure for academic and administrative activities was created and the university became functional.

We are committed to provide a world class infrastructure and learning environment to promote academics and all round development of students at the upcoming main campus of the university. This is evident from the meticulously planned details of the City Campus of the university.

In view of the growing manpower needs of Punjab and the country on the whole, twelve Schools of Study namely School of Environment and Earth Sciences, School of Social Sciences, School of Languages, Literature and Culture; School of Basic and Applied Sciences, School of Emerging Life Technologies, School of Information and Communicative Sciences, School of Design and Planning, School of Global Relations, School of Management, School of Engineering and Technology, School of Legal Studies and Governance and School of Health Sciences, each having 4-6 Centres in diverse but interrelated disciplines leading to establishment of 68 such Centres of Studies have been planned for the university. During the first year of existence of the university, admission to M.Phil.-Ph.D. Integrated Programmes in Biosciences under the School of Basic and Applied Sciences, in Environmental Science and Technology under the School of Environment and Earth Sciences, in Comparative Literature under the School of Languages, Literature and Culture; and in South and Central Asian Studies under the School of Global Relations was completed on the basis of an online national level entrance test conducted simultaneously at seven locations across the country.

The land for building main campus of the university, spread over 500 acres, has been acquired by the State Government at village Ghudda on Bathinda - Badal road nearly 25 Km away from the City Campus of the university in Bathinda city. I feel indebted to the members of the Executive Council, Academic Council, Finance Committee and other bodies of the university for their guidance and support from time to time. I am thankful to my colleagues in the university, particularly Prof. R.G. Saini and Prof. P. Ramarao who took the responsibility to prepare this Annual Report.

We shall consolidate our efforts in the forthcoming years to promote quality education, research and training at this university.

Prof. Dr. Jai Rup Singh  
Vice Chancellor



## 2 Executive Summary

The Central University of Punjab was established under the Central Universities Act No. 25 (2009). With the joining of Prof. Dr. Jai Rup Singh as the first Vice Chancellor on February 28, 2009 the university started functioning initially from his residence at D-13, Civil Station, Bathinda that was converted to Camp Office. In October 2009, the City Campus of the university was initiated on 37 acre abandoned premises of Bathinda Cooperative Integrated Cotton Ginning and Spinning Mills (BACOSPIN) obtained on lease from the Government of Punjab for five years. The administrative block of the City Campus accommodates Vice Chancellor's office and the other administrative staff. The academic block hosts the state of the art lecture rooms, science laboratories, computer laboratory, library, exhibition hall and a seminar hall to support academic activities. Semi-furnished transit hostels for faculty, hostels for boys and girls, guest house for the visitors to the university and a health centre have been established by renovating existing buildings in the residential area. The main campus of the university will be developed on a 500 acre site at village Ghudda on Bathinda - Badal road about 25 Km away from the City Campus.

The admission to 5 seats each in the M.Phil.-Ph.D. Integrated Programme in four streams, viz., Biosciences under the School of Basic and Applied Sciences, Environmental Science and Technology under the School for Environment and Earth Sciences, Comparative Literature under the School of Languages, Literature and Culture and in South and Central Asian Studies under the School of Global Relations was carried out. The admissions were done on the basis of an on-line entrance test conducted simultaneously at seven places on all India basis. Semester system is followed to deliver the course curricula and assessment of students is done using a Choice Based Credit System with continuous internal evaluation.

Several academic and cultural activities were organised by the university during the period under report. The first of these activities was a two-day book exhibition that was organized at the City Campus on 22-23 January, 2010. The exhibition was inaugurated by Gian Peeth awardee Prof. Gurdial Singh, who is one of the most celebrated and honoured Punjabi writers. Over 20 publishing houses participated in the exhibition and nearly 20,000 books were on display. An Indo-German Workshop on "Bioinformatics in Human Genetics: Mutations, Microarray Analysis and Ontologies" was organised in collaboration with the Centre for Genetic Disorders, Guru Nanak Dev University, Amritsar and Institute for Medical Genetics & Human Genetics, Charité-University of Medicine, Berlin, Germany during January 25 to 29, 2010. Different sessions in the workshop focussed on micro array data and its applications in transcriptional profiling, use of different computer languages and programmes in analysing genomic data, computational predictions to identify disease genes, prioritisation of candidate genes and predicting novel disease linked genes.

The Republic Day was celebrated with great enthusiasm on January 26, 2010 at the City Campus of university. The Vice Chancellor hoisted the national flag, inspected the guard of honour and sweets were distributed among those present at this occasion.

Prof. Yash Pal, former Chairman, University Grants Commission delivered the First Foundation Day Lecture, "Education Tomorrow" on March 27, 2010. The lecture was attended by Prof. Gurjeet Singh, Vice Chancellor, Rajiv Gandhi National Law University, Patiala in addition to the teachers and principals of local colleges. Prof. Gurjeet Singh also delivered a series of lectures on research methodology for the benefit of students and faculty of the university.

### 3 Establishment of the Central University of Punjab

With the establishment of Central University of Punjab at Bathinda under the Central Universities Act No. 25 (2009) and appointment of Prof. Dr. Jai Rup Singh as its first Vice Chancellor on 28<sup>th</sup> February 2009, the university started functioning initially from his previous official residence of the Vice Chancellor at Guru Nanak Dev University, Amritsar. Later, the residence of Vice Chancellor was moved to D-13, Civil Station, Bathinda, as provided by the Government of Punjab. Thereafter, porta cabins were installed at the residence of Vice Chancellor to accommodate his office and others and it became the Camp Office of the Central University of Punjab, that is still functional. A number of buildings suggested by the Punjab Government were considered for establishing the University and finally the 37 acre premises abandoned by Bathinda Cooperative Integrated Cotton Ginning and Spinning Mills (BACOSPIN) since 2001 was selected for locating Transit Campus of the Central University of Punjab and its lease was signed on 8<sup>th</sup> July, 2009.



Vice Chancellor signing the lease document



Taking over of BACOSPIN on 8<sup>th</sup> July 2009

This site was cleared of wild vegetation, cleaned and some buildings were renovated. Power and water supply connections were restored making it fit for functioning of the university and the site was named as City Campus of Central University of Punjab. The university started functioning in part from City Campus by the end of October 2009. A building close to the entry of the premises was named Administrative Block and housed office of the Vice Chancellor and also the faculty and class rooms. Later on the lecture rooms, science laboratories, library, computer laboratory, seminar hall, exhibition hall and a canteen were established in a much bigger building opposite to the entry point and named as Academic Block, and thus a University was established in an appropriate functional form.

#### 3.1 The objective of the University are to:

- Disseminate and advance knowledge by providing instructional and research facilities in such branches of learning as it may deem fit.
- Make special provisions for integrated courses in humanities, social sciences, science and technology in its educational programmes.
- Take appropriate measures for promoting innovations in teaching-learning process and inter-disciplinary studies and research.
- Educate and train manpower for the development of the country.
- Establish linkages with industries for the promotion of science and technology.
- Pay special attention to the improvement of the social and economic conditions and welfare of the people, their intellectual, academic and cultural development.



### 3.2 The Mission of the University is to:

- Offer a wide range of instructional and research facilities across integrated and cross-disciplinary studies.
- Promote innovation in teaching, learning, evaluation, research and consultancy services.
- Create an ignited workforce responsive to regional, national and global needs in tune with the requirements of academics, industry, business and administration.
- Participate in the problems and concerns of the surrounding community and the civil society.

### 3.3 The Vision of the University is:

- Uplifting and upgrading the standards of teaching, learning and research to global levels of excellence.
- Creation of international benchmarks in research, patents and consultancy services.
- Strategizing to become a global epicentre of knowledge, culture, skills and technologies.
- Developing a scientific temper and a performance culture of pro-active decision-making.
- Serving as a catalyst of change by setting high bench-marks in infrastructural growth, academic and co-academic excellence, learning and evaluation, social interfacing with the stake-holders, human resource development, safety and security systems, process management, and in seamless integration with the surrounding communities.
- Cross-pollinating with new ideas, new technologies, new platforms and new world-views.
- Continue to expand and explore locally, nationally and globally.

## 4 *The University Logo*

The famous tree 'Van' (*Salvadora oleoides*) known for remaining evergreen in harsh climatic conditions has been chosen as the basic motif of the Central University of Punjab's logo as it symbolises the perseverance of the will of people of Punjab to live even under harsh conditions. Because of an organic relationship between a tree and a saint, it contains within itself the essential concomitants of human existence viz., 'Knowledge and Wisdom'. The open book below the tree denotes the human ways to achieve these twin aspects of life. The symbolic meaning of the tree 'Van' also expresses the mystical heritage of Sufi saint Peer Haji Rattan who meditated in Bathinda and also the spiritual and humanistic legacy of 10<sup>th</sup> Sikh Guru Gobind Singh who visited this area in the beginning of 18th century.



## 5 *Location of the University - The City of Bathinda*

Bathinda city, situated in the Malwa region of Punjab, and known earlier as Bikramgarh and Tabarhind, has its origin in the ancient Indus Valley Civilization extending from pre to late Harappan period. A gateway that Bathinda is to the vast expanse of Thar desert of Rajasthan, it occupies a special place in the cultural and religious history of Punjab. It was home to a social reform movement initiated by the famous mystic Sufi saint Peer Haji Rattan who meditated here. Visit of tenth Guru of Sikhs, Guru Gobind Singh in 1706 and his stay in the historic fort “Qila Mubarak” before going to Talwandi Sabo is another important milestone in the rich history of this town. Talwandi Sabo, also known as “Guru Ki Kashi”, where the tenth Guru dictated Guru Granth Sahib, can be taken as the foundation of a holistic university system in Punjab. It is a tragic part of the history that later on Bathinda became an educationally backward bastion. Though continuing to preserve the folk traditions of the people, this historic town and its surrounding areas could not reap fruits of the modern education. The establishment of Central University of Punjab at Bathinda would help this city to emerge as a hub of advanced learning in science, technology and humanities. It would not only become the breeding ground for the trained human resources but would also place Bathinda on the map of developed India.

## 6 *The University Campuses*

The university is spread over three campuses, viz., Camp Office, City Campus and Main Campus

### 6.1 The Camp Office

Immediately upon joining of the Vice Chancellor, on 28<sup>th</sup> of February 2009, the University started functioning from his previous official residence of the Vice Chancellor at Guru Nanak Dev University, Amritsar. Later, on 25<sup>th</sup> April, 2009 with the allotment of accommodation for the Vice Chancellor by the Government of Punjab and shifting to Bathinda, a part of residence was turned in to the University office. Soon after, some porta cabins were installed at his residence to host the office of the Vice Chancellor, other staff and faculty. This office named as Camp Office, remains functional to maintain continuous liaison with the state and local administration.



Camp Office

## 6.2 The City Campus

A number of buildings suggested by the district administration were considered for establishing the university's Transit Campus in 2009. These included marriage palaces, shop-cum-offices, scattered rooms in some institutions, residential buildings, under construction schools, small institutions in dilapidated condition, etc. After much search, the abandoned premises of Bathinda Cooperative Integrated Cotton Ginning and Spinning Mills (BACOSPIN) were finally selected as the site for initiating the university activities in July 2009. These premises spread over 37 acres are located about 5 Km away from the Bathinda bus terminal on Bathinda - Mansa road. The buildings abandoned long back in 2001 were in dilapidated condition and extensively damaged.

The premises of BACOSPIN were devoid of water and power supply connections and heaps of debris were lying everywhere. Wild vegetation had taken roots in the deserted areas. Within months after taking over, the premises were cleared of wild vegetation, cleaned, electricity and water supply connections were restored and a part of the renovated buildings became ready for occupation by the end of October 2009.

Continuous supply of electricity to the premises was ensured through the installation of two silent diesel generator sets of 350 kW and 90 kW capacities each, respectively. In tune with the university's eco-friendly motto, two 5 kW Solar-Wind Energy Hybrid Systems were also installed to supply uninterrupted electricity to computer laboratory. The illumination of internal roads at the campus is also through solar street lights. The premises being in close proximity of Bathinda city were named 'City Campus' of the Central University of Punjab.



Cleaning operation



Renovation of a road



Levelling for making playgrounds

This campus of the university has an administrative block, an academic block, a small residential area and enough open space for several academic and sports activities. Within an year of its establishment, the City Campus of the university is sprawling with lush green lawns dotted with beautiful trees, state of the art lecture rooms, science laboratories, a well equipped library, exhibition hall and a seminar room to support academic activities. A computer laboratory equipped with latest software and fast internet connectivity has been established. The staff quarters of Bathinda Cooperative Integrated Cotton Ginning and Spinning Mills (BACOSPIN) have been converted in to semi-furnished transit hostels for faculty, hostels for boys and girls and a well furnished guest house for visitors to the university. Medical aid is available at the University Health Centre that is located close to the transit faculty accommodation and girls hostel.



Entrance to the City Campus



Green Lawns at the City Campus



Administrative Block



Academic Block

The City Campus now has adequate logistical support required for effective and efficient handling of all academic, sports and cultural activities till the main campus at village Ghudda is ready to move in.

## 6.3 The Main Campus

Nearly 500 acres of land have been acquired by the Government of Punjab on Bathinda - Badal road about 25 Km away from City Campus for developing the main campus of the Central University of Punjab. The land has been acquired by the University and the process of electronic topographical survey has also been completed. Having beautiful contours surrounded by lush green fields and some orchards within, the main campus site provides magnificent landscape for developing it in to an architectural marvel.



Site for Main Campus at village Ghudda

The main campus of the university will adhere to Green Rating for Integrated Habitat Assessment (GRIHA) of Tata Energy Resource Institute to ensure green architecture and optimized use of energy resources. The existing traditional trees and rare shrubs, growing at the main campus site shall be preserved.

## 7 *The Statutory Bodies of Central University of Punjab*

Soon after the establishment of the university, the nominations to the Executive Council, Academic Council & Finance Committee, were made by the Government of India and the Planning Board and Building Advisory Committee were constituted by the University. The names and designations of the members of these committees are listed below:

### 7.1 Executive Council

1. **Prof. Jai Rup Singh**  
Vice Chancellor (Ex-officio Chairman)  
Central University of Punjab  
Bathinda - 151 001
2. Secretary (Ex-officio member)  
Department of Higher Education  
Ministry of Human Resource Development  
Government of India, Shastri Bhawan  
New Delhi-110 001
3. Secretary (Ex-officio member)  
Higher Education  
Government of Punjab  
Room No. 527, 5<sup>th</sup> Floor, Mini Secretariat, Sector-9  
Chandigarh-160 009
4. **Prof. Seyed E. Hasnain**  
Vice Chancellor, University of Hyderabad  
P.O. Central University  
Hyderabad-500 046

5. **Dr. K. K. Talwar**  
Director, Post Graduate Institute of Medical Education and Research  
Sector-12, Chandigarh - 160 012
6. **Prof. K. B. Powar**  
Advisor (Higher Education), Emeritus Professor  
YMC Open University  
Nashik 15, Marvel Memories  
Ramnagar Colony, Bavadhan  
Pune - 411 021
7. **Dr. H. P. Dikshit**  
Director General, School of Good Governance and Policy Analysis, C-402, 4<sup>th</sup> Floor  
Narmada Bhawan, 59, Arera Hills  
Bhopal-462 011
8. **Prof. Pankaj Chandra**  
Director, Indian Institute of Management  
Bannerghatta Road  
Bangluru-560 076
9. **Prof. S. C. Saxena**  
Director, Indian Institute of Technology  
Roorkee - 247 667
10. **Prof. P. Ramarao** (Up to December 31, 2009)  
Director, National Institute of Pharmaceutical Education and Research  
Mohali 160 062
- Prof. G. K. Chadha** (w.e.f. February 4, 2010)  
Chief Executive Officer, South Asian University  
CRS Language Laboratory, JNU Old Campus  
Aruna Asaf Ali Road  
New Delhi - 110 067
11. **Prof. Goverdhan Mehta** (Up to February 3, 2010)  
Chairman, National Assessment and Accreditation Council, P.O. Box No. 1075  
Nagarbhavi  
Bangluru - 560 072
- Dr. Moin Uddin** (w.e.f. February 4, 2010)  
Pro-Vice Chancellor, Delhi Technological University  
Shahbad Daultapur, Main Bawan Road  
Delhi - 110 042



Members of First Executive Committee  
(20<sup>th</sup> October, 2009)



First Executive Committee Meeting  
(20<sup>th</sup> October, 2009)



First Academic Committee Meeting  
(15<sup>th</sup> November, 2009)



Members of First Academic Committee  
(15<sup>th</sup> November, 2009)



## 7.2 Academic Council

1. **Prof. Jai Rup Singh**  
Vice Chancellor (Ex-officio Chairman)  
Central University of Punjab .  
Bathinda - 151 001
2. **Dr. N. K. Ganguly**  
Former Director General, ICMR, Biotechnology Fellow and Advisor  
Translational Health Science Technology Institute, National Institute of Immunology  
Aruna Asaf Ali Marg  
New Delhi - 110 067
3. **Prof. Deepak Pental**  
Vice Chancellor, Delhi University  
Delhi - 110 007
4. **Dr. Sudarshan Iyengar**  
Vice Chancellor, Gujarat Vidyapith, Near Income Tax Office, Ashram Road  
Ahmadabad - 380 014
5. **Prof. D. P. Singh**  
Vice Chancellor, Banaras Hindu University  
Varanasi - 221 005
6. **Dr. Vijay Khole**  
Former Vice Chancellor, University of Mumbai, Chief Academic Advisor, Kohinoor Education Trust  
Kohinoor Corporate office, Senpatio Bapat Marg, Dadar (W)  
Mumbai - 400 028
7. **Prof. Veer Singh**  
Vice Chancellor, NALSAR University of Law  
Campus Justice City, Sameerpet, R. R. District  
Hyderabad - 500 078
8. **Dr. Gurjeet Singh**  
Vice Chancellor, Rajiv Gandhi National University of Law  
Patiala - 147 001
9. **Prof. N. Sathyamurthy**  
Director, Indian Institute of Science Education and Research  
Translation Health Technology Institute, Transit Campus: MGSIPAP Complex, Sector-26  
Chandigarh-160 019
10. **Dr. K. N. Pathak**  
Former Vice Chancellor, Panjab University, Professor Emeritus, Panjab University  
Chandigarh - 160 014
11. **Prof. K. K. Aggarwal**  
Former Vice Chancellor, Guru Gobind Singh Inderprastha University  
A-3/512 Milan Vihar, Patparganj, 72, I. P. Extension  
Delhi - 110 092
12. **Dr. D. S. Rathore**  
Former Vice Chancellor, Himachal Pradesh Krishi Vishwavidyalaya  
Palampur, Himachal Pradesh, Flat P, J-1/63, Khirki Extension, Malviya Nagar  
New Delhi - 1110 017
13. **Dr. Harjit Singh**  
Professor Emeritus, Department of Chemistry  
Guru Nanak Dev University  
Amritsar - 143 001
14. **Prof. V. Krishnan**  
Honorary Professor, Jawaharlal Nehru Centre for Advanced Scientific Research  
Jakkur P.O. Bangaluru - 560 064
15. **Prof. Mushahid Hussain**  
Professor of Physics, Jamia Milia Islamia, Jamia Nagar  
New Delhi - 110 025.

16. **Prof. (Dr.) A. K. Sood**  
Professor of Physics, Indian Institute of Science  
Bangaluru - 560 012
17. **Prof. Indu Banga**  
Professor of History, Panjab University  
622, Phase III-A, Sector 53  
Mohali - 160 059
18. **Prof. Abhai Mansingh**  
Former Professor of Physics and Director, South Campus  
University of Delhi, 405-A, IIA Appartments, B-7, Vasundhra Enclave  
Delhi - 110 096
19. **Prof. Partha P. Majumdar**  
Director, National Institute of Biomedical Genomics  
Netaji Subhash Sanatorium (T. B. Hospital), 2nd Floor, P.O. N.S.S.  
Kalyani - 741 251
20. **Dr. Javed Alam**  
Former Prof. of European Studies  
Central Institute of English and Foreign Languages  
102, Sai Saraswati Residence, Ravindernagar, Sitafal Mandi  
Hyderabad - 500 061
21. **Prof. R. K. Bedi**  
Department of Physics, Guru Nanak Dev University  
Amritsar - 143 005

### 7.3 Finance Committee

1. **Prof. Jai Rup Singh**  
Vice Chancellor (Ex-officio Chairman)  
Central University of Punjab  
Bathinda - 151 001
2. **Sh. Jagmohan Singh Raju**  
Joint Secretary, Department of School Education and Literacy  
Ministry of Human Resource Development, Shastri Bhawan  
New Delhi - 110 001
3. **Dr. H. P. Dikshit**  
Director General, School of Good Governance and Policy Analysis  
C-402, 4th Floor, Narmada Bhawan, 59, Arera Hills  
Bhopal-462 011
4. **Sh. N. S. Rattan**  
Former Vice Chancellor Punjabi University, House No. 168, Sector 33 A  
Chandigarh - 160 020
5. **Dr. S. K. Salwan**  
Former Vice Chancellor Punjab Technical University, 640  
Hari Bahu Upadaya Extension, Puskar Road  
Ajmer - 305001
6. **Sh. Naveen Soi**  
Director, Department of Higher Education  
Ministry of Human Resource Development, Shastri Bhawan  
New Delhi - 110 115
7. **Dr. Shakeel Ahmed**  
Deputy Secretary, University Grants Commission  
Bahadur Shah Zafar Marg  
New Delhi - 110 002.



## 7.4 Planning Board

1. **Prof. Jai Rup Singh**  
Vice Chancellor (Ex-officio Chairman)  
Central University of Punjab  
Bathinda - 151 001
2. **Prof. Seyed E. Hasnain**  
Vice Chancellor, University of Hyderabad  
P.O. Central University  
Hyderabad-500 046
3. **Prof. K. B. Powar**  
Advisor (Higher Education), Emeritus Professor  
YMC Open University, Nashik, 15, Marvel Memories  
Ramnagar Colony, Bavadhan  
Pune - 411 021
4. **Dr. S. K. Salwan**  
Former Vice Chancellor Punjab Technical University  
640, Hari Bahu Upadaya Extension, Puskar Road  
Ajmer - 305001
5. **Dr. P. P. S. Kapur**  
Former Pro-Vice Chancellor, Guru Nanak Dev University  
10 C, Raj Guru Nagar  
Ludhiana - 141 006
6. **Prof. P. Rama Rao**  
Professor, School of Basic and Applied Sciences  
Central University of Punjab  
Bathinda - 151 001
7. **Dr. Harjit Singh**  
Professor Emeritus, Department of Chemistry  
Guru Nanak Dev University  
Amritsar - 143 001
8. **Dr. Ashwani Kumar**  
Professor and Head, Department of Microbiology  
University College of Medical Sciences, Dilshad Garden, Shahdra  
Delhi - 110 095
9. **Dr. R. S. Khandpur**  
Director General, Pushpa Gujral Science City  
Jalandhar-Kapurthala Road  
Kapurthala - 144 601



## 7.5 Building Advisory Committee

1. **Prof. Jai Rup Singh**  
Vice Chancellor (Ex-officio Chairman)  
Central University of Punjab  
Bathinda - 151 001
2. **Dr. Moin Uddin**  
Director, Dr. B. R. Ambedkar National Institute of Technology  
Jalandhar - 144011
3. **Dr. Gurjeet Singh**  
Vice Chancellor, Rajiv Gandhi National University of Law  
Patiala - 147 001
4. **Prof. P. Rama Rao**  
Professor, School of Basic and Applied Sciences  
Central University of Punjab  
Bathinda - 151 001
5. **Sh. S. L. Kaushal**  
Former Chief Architect, Punjab, 2865, Sector 42-C  
Chandigarh 160 020
6. **Mr. Jit Kumar Gupta**  
Former Advisor, Punjab Urban Development Authority  
Chandigarh - 160 020
7. **Dr. S. S. Behl**  
Professor, Department of Architecture  
Guru Nanak Dev University  
Amritsar - 143 001
8. **Dr. Harpal Singh**  
Principal, Giani Zail Singh College of Engineering and Technology  
Bathinda - 151 001
9. **Er. A.K.Singla**  
Superintending Engineer, Public Works Department  
Bathinda - 151 001
10. **Dr. Prabhjot Kaur**  
Assistant Professor, Department of Architecture  
Giani Zail Singh College of Engineering and Technology  
Bathinda - 151 001
11. **Prof. R. K. Deora**  
Special Officer, Central University of Punjab  
Bathinda - 151 001



Suggestions from public were invited through open advertisement regarding the Schools of Study and the various Centres to be established under each of these schools for various programmes. These suggestions along with the proposals envisaged by the university were extensively debated by several expert committees consisting of renowned educationists. Finally the Academic Council and Executive Council decided that the Central University of Punjab will have 12 Schools with 68 Centres of Studies. At present four centres viz. Centre for South and Central Asian Studies under School of Global Relations, Centre for Environmental Science and Technology under School of Environment and Earth Sciences, Centre for Biosciences under the School of Basic and Applied Sciences, and Centre for Comparative Literature under School of Languages, Literature and Culture are operational. The Schools of Studies and the various centres to be established in each of these schools are given below:

### 1. School of Environment and Earth Sciences

- a. Centre for Environmental Science and Technology
- b. Centre for Biosafety and Biosecurity
- c. Centre for Earth Sciences
- d. Centre for Meteorological Studies
- e. Centre for Disaster Management
- f. Centre for Natural Resource Management
- g. Centre for Nanotoxicology and Nanobiosafety
- h. Centre for Alternate Energy Resources

### 2. School of Social Sciences

- a. Centre for Economic Studies
- b. Centre for Social Studies
- c. Centre for Historical Studies
- d. Centre for Social Work
- e. Centre for Rural Development
- f. Centre for Population and Gender Studies

### 3. School of Languages, Literature and Culture

- a. Centre for Linguistics and Culture
- b. Centre for Comparative Literature
- c. Centre for Classical and Modern Languages
- d. Centre for Museology, Archaeology and Conservation

### 4. School of Basic and Applied Sciences

- a. Centre for Biosciences
- b. Centre for Chemical and Pharmaceutical Sciences
- c. Centre for Physical and Mathematical Sciences
- d. Centre for Waste Management
- e. Centre for Advanced Materials and Nanotechnology
- f. Centre for Food Science Technology
- g. Centre for Computational Sciences

## 5. School of Emerging Life Science Technologies

- a. Centre for Stem Cells and Recombinant Technologies
- b. Centre for Genetic Diseases and Molecular Medicine
- c. Centre for Bioinformatics
- d. Centre for Health Sciences and Bioethics

## 6. School of Information and Communicative Sciences

- a. Centre for Information Dissemination Technologies
- b. Centre for Mass Communication and Media Studies
- c. Centre for Graphic Arts, Animation and Cinematic Studies

## 7. School of Design and Planning

- a. Centre for Green Architecture and Landscape Design
- b. Centre for Rural and Urban Built Environment
- c. Centre for Ancient and Modern Architecture
- d. Centre for Industrial and Product Design
- e. Centre for Interior Design

## 8. School of Global Relations

- a. Centre for Regional Conflicts and Cooperation
- b. Centre for South and Central Asian Studies
- c. Centre for Global Economy and Geopolitics
- d. Centre for International Institutions and Organizations

## 9. School of Management

- a. Centre for Corporate and Industrial Relations
- b. Centre for Financial Administration
- c. Centre for Retail and Marketing
- d. Centre for Agri-Business
- e. Centre for Human Resource Management
- f. Centre for Production Management
- g. Centre for Information Technology and Management
- h. Centre for Health and Hospital Management
- i. Centre for Hospitality and Tourism
- J. Centre for Organisational Behaviour

## 10. School of Engineering and Technology

- a. Centre for Computer Science and Technology
- b. Centre for Microelectronics
- c. Centre for Biomedical Engineering
- d. Centre for Microwave Technology
- e. Centre for Thermal Imaging and Image Processing
- f. Centre for Ballistics Technology
- g. Centre for Petroleum Technology



## 11. School of Legal Studies and Governance

- a. Centre for Corporate Law
- b. Centre for International Law
- c. Centre for Environmental Law
- d. Centre for Human Rights

## 12. School of Health Sciences

- a. Centre for Medical Sciences
- b. Centre for Dental Sciences
- c. Centre for AYUSH (Ayurveda, Yoga & Natural Therapy, Unani, Sidha, Homoeopathy)
- d. Centre for Nursing and Physiotherapy
- e. Centre for Human Kinetics
- f. Centre for Human Genetics

### 8.1 *Schools of Studies and Centres established during 2009-10 and their faculty*

Four Schools of Studies were established during 2009-10 after great deal of discussion. The names of faculty members appointed in each of these schools and their designations are given in the following sections.

### 8.2 School of Basic and Applied Sciences - Centre for Biosciences

| S.No. | Name and Designation                            | Date of Joining                              |
|-------|---|--|
| 1.    | Prof. P. Ramarao, Professor & Dean              | January 1, 2010                              |
| 2.    | Dr. Rachana Bhardwaj, Assistant Professor       | September 17, 2009                           |
| 3.    | Dr. Sanjeev Sharma, Assistant Professor         | September 22, 2009                           |
| 4.    | Dr. Vijender Singh Beniwal, Assistant Professor | October 1, 2009<br>(Resigned March 29, 2010) |

### 8.3 School of Environment and Earth Sciences - Centre for Environmental Sciences and Technology

| S.No. | Name and Designation                  | Date of Joining |
|-------|---------------------------------------|-----------------|
| 1.    | Dr. Sunil Mittal, Assistant Professor | March 2, 2010   |

### 8.4 School of Languages, Literature and Culture - Centre for Comparative Literature

| S.No. | Name and Designation                    | Date of Joining  |
|-------|---|------------------|
| 1.    | Dr. Zameerpal Kaur, Assistant Professor | October 21, 2009 |
| 2.    | Dr. Paramjeet Kaur, Assistant Professor | March 3, 2010    |



## 8.5 School of Global Relations - Centre for South and Central Asian Studies

| S.No. | Name and Designation                           | Date of Joining |
|-------|--|-----------------|
| 1.    | Dr. Surinder Kumar Singla, Assistant Professor | March 22, 2010  |

## 9 Non-Teaching Staff of the University

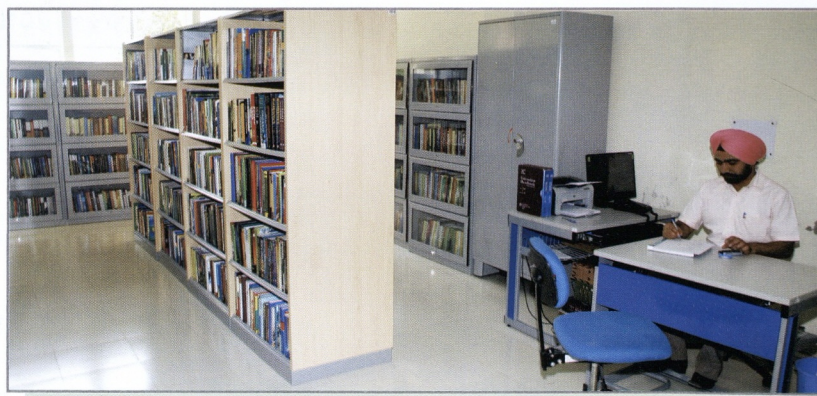
| S.No. | Name and Designation                                     | Date of Joining                                   |
|-------|--|---|
| 1.    | Prof. R. K. Deora<br>Special Officer (Administration)    | August 1, 2009                                    |
| 2.    | Dr. Gurmail Singh Mauji<br>Emergency Medical Officer     | August 5, 2009<br>(Resigned February 4, 2010)     |
| 3.    | Ms. Shweta Arora<br>Assistant Registrar                  | July 7, 2009                                      |
| 4.    | Mr. Rajinder Singh<br>Assistant Liaison Officer          | July 6, 2009                                      |
| 5.    | Mr. S.P. Arora<br>Personal Secretary to Vice Chancellor  | September 16, 2009<br>(Resigned February 4, 2010) |
| 6.    | Mr. J.K. Verma,<br>Personal Secretary to Vice Chancellor | June 1, 2009<br>(Resigned June 12, 2009)          |
| 7.    | Mr. Vineet Kumar<br>Section Officer                      | February 19, 2010<br>(Resigned March 31, 2010)    |
| 8.    | Mr. Ravi Pal Garg<br>Junior Estate Officer               | July 7, 2009<br>(Resigned September 10, 2009)     |
| 9.    | Mr. Gurmail Singh<br>Accountant                          | April 28, 2009                                    |
| 10.   | Ms. Poonam Rani<br>Computer Operator                     | May 10, 2009                                      |
| 11.   | Mr. Ashish Dhir,<br>Computer Operator                    | August 7, 2009                                    |
| 12.   | Mr. Jaswinder Singh Brar<br>Data Entry Operator          | July 1, 2009<br>(Resigned July 7, 2009)           |
| 13.   | Mr. Rohit Rastogi<br>Data Entry Operator                 | July 3, 2009                                      |
| 14.   | Mr. Navjeet Singh Aulakh<br>Data Entry Operator          | March 12, 2010<br>(Resigned March 31, 2010)       |
| 15.   | Mr. Sunil Mittal,<br>Technical Assistant                 | October 1, 2009<br>(Resigned March 1, 2010)       |
| 16.   | Mr. Bhupinder Singh<br>Junior Professional Assistant     | January 1, 2010                                   |
| 17.   | Mr. Vimal Kumar,<br>Assistant                            | March 2, 2010                                     |
| 18.   | Mr. Vivek Kumar<br>Assistant (Accounts)                  | March 25, 2010                                    |

## 10 Infrastructure

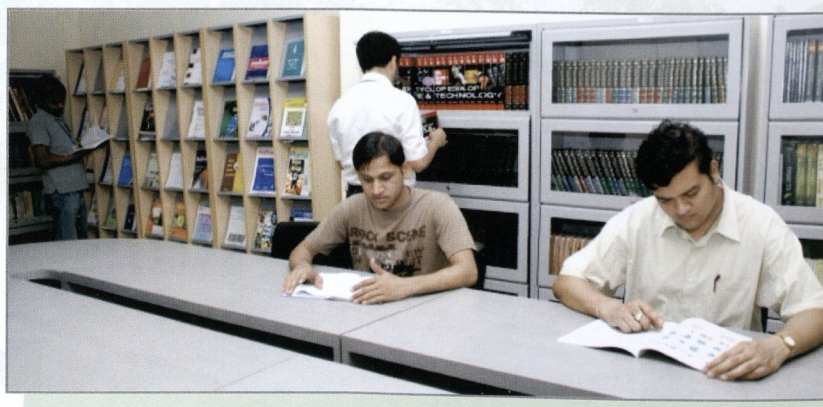
Liberal Grants from the Government of India made it possible to undertake restoration and renovation of some of the dilapidated buildings to create infrastructure conducive for university's functioning. The University's entrance has been given a facelift through the grass belt dotted with beautiful plants. Academic and administrative blocks have been elegantly renovated to make functional offices, classrooms, science laboratories, a library and a seminar room. A change in the outlook of the campus after the first phase of renovation is clearly visible.

### 10.1 The University Library

An air-conditioned library was established in a large room and was stocked with nearly 3,700 latest books in the disciplines of Environmental Sciences, Earth Sciences, Biosciences, Health Care, Medical Sciences, Engineering and Technology, Management, Commerce, Social Sciences, Languages, Literature, Culture, History and Information and Communication Technology. The university subscribed to print editions of 37 International and 12 National Journals with free access to all these journals by students and faculty. In addition, access to 238 online e-journals is provided through ScienceDirect and to other nearly 5000 e-journals through INFONET.

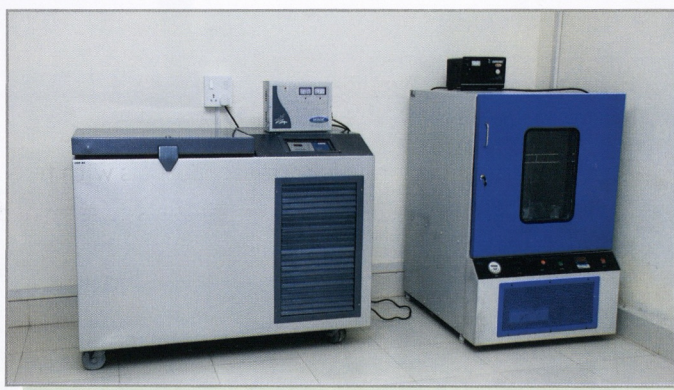


The University Library



## 10.2 Research Laboratories

The University has a well furnished chemical sciences laboratory and a biological sciences laboratory. A sophisticated instruments laboratory having Olympus SFX100 microscope with digital fluorescence imaging, trinocular research microscope with digital camera and imaging software, binocular microscopes, Real Time PCR, Gradient PCR, ELISA reader, Double Beam Spectrophotometer, different types of centrifuges, deep freezers, precision ovens, and electrophoresis units etc., was established.



Research Laboratories



## 10.3 Lecture Rooms and Seminar Hall

Three state of the art lecture rooms and a seminar hall equipped with a computer and latest electronic projection facilities have been established for holding classes, invited lectures and seminars.

## 10.4 Computer Laboratory

A computer laboratory having 25 desktop computers with high speed internet connectivity and latest versions of word processing, data storage and retrieval and graphics software were made available to the staff and students for their educational and professional needs.



Computer Laboratory

## 10.5 Solar-Wind Energy Hybrid System and Solar Street Lights

A 5 kW Solar-Wind Energy Hybrid System has been installed at the City Campus of the University through Punjab Energy Development Agency (PEDA) at a cost of Rupees 8,05,000 and nearly Rupees 17,00,000 provided by the Ministry of New and Renewable Energy, Government of India. The system has two small wind-driven turbines generating 3.2 kW of electric power. In addition, all the roads in the City Campus are illuminated through solar street lights.



Solar-Wind Energy Hybrid System



Diesel Generating Sets



Solar Lights

## 10.6 Diesel Generating Sets

The electricity supply to the City Campus, was restored and a hotline from the Punjab State Power Corporation Limited was obtained to ensure uninterrupted supply of electricity to the university. Two eco-friendly diesel generators of 320 KVA and 63 KVA capacity each have also been installed for the supply of electricity to important installations in the City Campus in case of breakdown of hotline.



## 10.7 Guest House

A residential building within the premises of the City Campus was transformed into a well furnished guest house. The guest house has three rooms and all the modern amenities for comfortable stay of the guests.

## 10.8 Transit Accommodation

The university has 16 semi furnished houses of three different types to accommodate new faculty members free of cost for the first three months after their induction in to service.



Transit Accommodation

## 10.9 Student Hostels

Half of the houses of transit accommodation at the City Campus were converted into hostel for boys and girls. The students are provided with comfortable independent semi furnished hostel accommodation at the City Campus of the university. Indoor games are also provided to the students. Close to the hostels, an air-conditioned reading room has been provided both for boys and girls.



Girls Hostel

## 10.10 Health Centre

A Health Centre has been set up in the residential area close to the transit faculty accommodation and girls hostel where medical assistance to staff and students of the university is available.

## 10.11 Biometric System for Staff Attendance

The university has installed a biometric systems for recording staff attendance. It uses a fingerprint recognition system to verify identity and to precisely record time-in and time-out of each staff member with other necessary details.

## 11 Academic Programmes

During the first year of establishment, academic curricula were framed after exhaustive discussions with experts from other universities. As soon as the class rooms were ready, the students were admitted to M.Phil.-Ph.D. Integrated Programme in four streams, viz., Biosciences under the School of Basic and Applied Sciences, Environmental Science and Technology under the School for Environment and Earth Sciences; Comparative Literature under the School of Languages, Literature and Culture and in South and Central Asian Studies under the School of Global Relations.



A Syllabus Committee Meeting

The admission to these four programmes was done on the basis of an online National Level Entrance Examination conducted by the university simultaneously at seven different locations across the country on January 25, 2010. The details of the M.Phil.- Ph.D. Integrated Programmes offered by the university is given below:

| Sr.No. | School of Study                             | Centre                               | Eligibility for Admission   | No. of Seats |
|--------|---|--------------------------------------|---|--------------|
| 1      | School of Basic and Applied Sciences        | Biosciences                          | M.Sc. in Botany, Biotechnology, Biochemistry, Microbiology, Molecular Biology, Zoology or any other branch of life sciences with minimum of 55% marks.  | 5            |
| 2      | School of Environment and Earth Sciences    | Environmental Science and Technology | M.Tech./M.E./M.Sc. in Environmental Sciences/M.Sc. in Botany, Biochemistry, Microbiology, Molecular Biology, Zoology or any other branch of life sciences or chemical sciences with minimum of 55% marks. | 5            |
| 3      | School of Languages, Literature and Culture | Comparative Literature               | Master's degree in Comparative Literature, Linguistics, any Indian Language or allied relevant field with minimum of 55% marks.   | 5            |
| 4      | School of Global Relations                  | South and Central Asian Studies      | Master's degree in South and Central Asian Studies, History, Political Science, Economics, Sociology, Public Administration, Geography or allied relevant field with minimum of 55% marks.                | 5            |



## 11.1 Semester System

University endeavours to impart the best of current education to students for success at national and international levels. Efforts are being made to shape the Central University of Punjab to be a centre of excellence in education and research. The university follows semester system to deliver the course curricula for all the academic programmes offered. The evaluation of students is done according to a Choice Based Credit System with continuous internal evaluation that has unique features like enhanced learning opportunities, ability to match the student's scholastic needs and aspirations, horizontal intra and inter school mobility, inter institutional transferability, flexibility to complete the programme over an extended period and comparability of educational programmes across the country.

## 11.2 Incentives for Students

- i) 24-hour open, air-conditioned reading rooms having text books and desktop PCs are operational near the hostels for convenience of students.
- ii) The university is providing up-to-date library support and access to 3700 books, 37 international and 12 national journals and documentation facilities. Online access to 238 e-journals through ScienceDirect and another nearly 5000 e-journals is provided through INFONET.
- iii) A computer laboratory with 25 computers having high speed internet connectivity.
- iv) All students registered for M.Phil.-Ph.D. Integrated Programme are given Rs. 3,000 per month as stipend during M.Phil. and Rs. 5,000 during Ph.D.
- v) Contingency of Rs. 8,000 per annum for scholars working in humanities and social sciences and Rs.10,000 per annum for those working in science subjects is provided.
- vi) Credit transfer system with other universities is in the offing.

## 12 *Academic Activities*

### 12.1 Indo-German Workshop

A five-day Indo-German Workshop on "Bioinformatics in Human Genetics: Mutations, Microarray Analysis and Ontologies" was organised in collaboration with the Centre for Genetic Disorders, Guru Nanak Dev University, Amritsar and Institute for Medical Genetics & Human Genetics, Charité-University of Medicine, Berlin, Germany from January 25 to 29, 2010. Sessions of the workshop during 25<sup>th</sup> to 27<sup>th</sup> January were held at the Centre for Genetic Disorders and on 28<sup>th</sup> and 29<sup>th</sup> January the subsequent sessions were organised at the City Campus of university.

Dr. Peter N. Robinson, Head, Computational Biology and Bioinformatics Unit, Institute for Medical Genetics & Human Genetics, Charité University of Medicine, Berlin, Germany and Prof. Jai Rup Singh, Vice Chancellor, Central University of Punjab were the overseas and Indian workshop coordinators, respectively. Twenty participants from different parts of India participated in this workshop. Different sessions in the workshop focussed on micro array data and its applications in transcriptional profiling, use of different computer languages and programmes in analysing genomic data, computational predictions to identify disease genes, prioritisation of candidate genes and predicting novel disease linked genes.



Indo-German Workshop on Bioinformatics in Human Genetics, January 25-29, 2010



Prof. Jai Rup Singh and Dr. P. N. Robinson, Workshop Coordinators

## 12.2 Collaboration for Research and Exchange Programmes

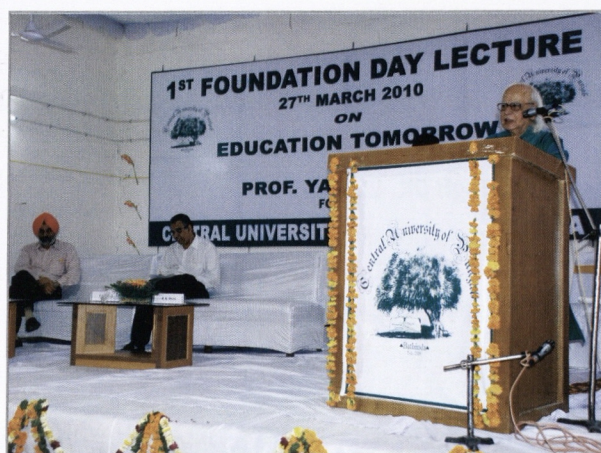
A joint research project with the University of Oklahoma, USA was developed and submitted for funding on September 25, 2009. Development of joint research projects and possibility of student and faculty exchange programmes with the University of Witwatersrand, Johannesburg, South Africa; Westfälische Wilhelms University, Münster and Humboldt University, Berlin, Germany; All India Institute of Medical Sciences, New Delhi; Central Scientific Instrumentation Organisation, Chandigarh; Indian Institute of Science Education and Research, Mohali; Institute of Himalayan Bioresource Technology, Palampur and National Institute for Pharmaceutical Education and Research, Mohali were discussed with representatives of these institutions.

## 12.3 Foundation Day Celebrations

As a part of the first Foundation Day celebrations, the First Foundation Day Lecture of the university was celebrated on March 27, 2010. Prof. Yash Pal, former Chairman, University Grants Commission, delivered the lecture on "Education Tomorrow". Prof. Yash Pal appreciated the progress made by the university and advised for evolving a new system of education to reduce the emerging gaps in various fields of knowledge. He stressed on the need to establish and strengthen links between different branches of learning. Prof. Gurjeet Singh, Vice Chancellor, Rajiv Gandhi National Law University, Patiala, principals and teachers of local colleges and many prominent citizens also attended the lecture delivered by Prof. Yash Pal.



The Vice Chancellor welcoming Prof. Yash Pal, March 26, 2010



Prof. Yash Pal delivering First Foundation Day Lecture, March 27, 2010



The Vice Chancellor presenting memento to Prof. Yash Pal



A cultural programme at the 1st Foundation Day

## 12.4 Publications by the faculty

- Been LF, Nath SK, Ralhan SK, Wander GS, Mehra NK, Singh J, Mulvihill JJ, Sanghera DK. 2010. Replication of association between a common variant near melanocortin-4 receptor gene and obesity-related traits in Asian Sikhs. *Obesity (Silver Spring)*. **18**:425-429.
- Dadhania VP, Tripathi DN, Vikram A, Ramarao P, Jena GB. 2010. Intervention of alpha-lipoic acid ameliorates methotrexate-induced oxidative stress and genotoxicity: A study in rat intestine. *Chem Biol Interact*. **183**:85-97.



- Gupta C, Vikram A, Tripathi DN, **Ramarao P**, Jena GB. 2010. Antioxidant and antimutagenic effect of quercetin against DEN induced hepatotoxicity in rat. **Phytother Res.** **24**:119-28.
- Jena G, Vikram A, Tripathi DN, Ramarao P. 2010. Use of chemoprotectants in chemotherapy and radiation therapy: the challenges of selecting an appropriate agent. **Integr Cancer Ther.** **9**:253-8.
- Kaur A, **Singh JR**. 2010. Chromosome abnormalities: Genetic disease burden in India. **Int J Hum Genet.** **10**:1-14.
- **Kaur Z**. 2009. Punjabi Alochna de khetar vich Bharti Kaav-shastri Alochna da Armabh te Vikas. **Khoj Patrika** **70**: (In Press)
- **Kaur Z**. 2010. Bharti Kaav-Shatar: Servekhan te Mulaankan. **Khoj Patrika** **71**: (In Press)
- **Kaur Z**. 2010. Sahit Shastar: Servekhan te Mulankan. **Khoj Patrika** **71**: (In Press)
- Mughal A, Vikram A, **Ramarao P**, Jena GB. 2010. Micronucleus and comet assay in the peripheral blood of juvenile rat: establishment of assay feasibility, time of sampling and the induction of DNA damage. **Mutat Res.** **700**:86-94.
- Kushwaha S, Tripathi DN, Vikram A, **Ramarao P**, Jena GB. 2010. Evaluation of multi-organ DNA damage by comet assay from 28 days repeated dose oral toxicity test in mice: a practical approach for test integration in regulatory toxicity testing. **Regul Toxicol Pharmacol.** **58**:145-54.
- Sanghera DK, Demirci FY, Been L, Ortega L, Ralhan S, Wander GS, Mehra NK, **Singh J**, Aston CE, Mulvihill JJ, Kamboh IM. 2010. PPARG and ADIPOQ gene polymorphisms increase type 2 diabetes mellitus risk in Asian Indian Sikhs: Pro12Ala still remains as the strongest predictor. **Metabolism** **59**:492-501.
- **Singh JR**, Singh AR, Singh AR. 2010. Directory of Human Genetic Services in India - 2007. **Int J Hum Genet.** **10**:187-192.
- Vanita V, **Singh JR**, Singh D, Varon R, Sperling K. 2009. Novel mutation in the gamma-S crystallin gene causing autosomal dominant cataract. **Molecular Vision** **15**:476-481.
- Vanita V, Sperling K, Sandhu PS, Sandhu HS, **Singh JR**. 2009. Novel EXT1 and EXT2 Mutations in hereditary multiple exostoses families of Indian origin. **Genet Test Mol Biomarkers** **13**:43-49.
- Vikram A, Jena G, **Ramarao P**. 2010. Insulin-resistance and benign prostatic hyperplasia: the connection. **Eur J Pharmacol.** **641**:75-81.
- Vikram A, Jena GB, **Ramarao P**. 2010. Increased cell proliferation and contractility of prostate in insulin resistant rats: linking hyperinsulinemia with benign prostate hyperplasia. **Prostate.** **70**:79-89.

## 12.5 Membership of Statutory Bodies

Prof. P. Ramarao was Member, Research Committee, IMTECH, Chandigarh and Member, Board of Studies, SVKM's NMIMS, School of Pharmacy and Technology Management, Mumbai.

## 12.6 Conference/Seminar/Symposium/Workshop Attended

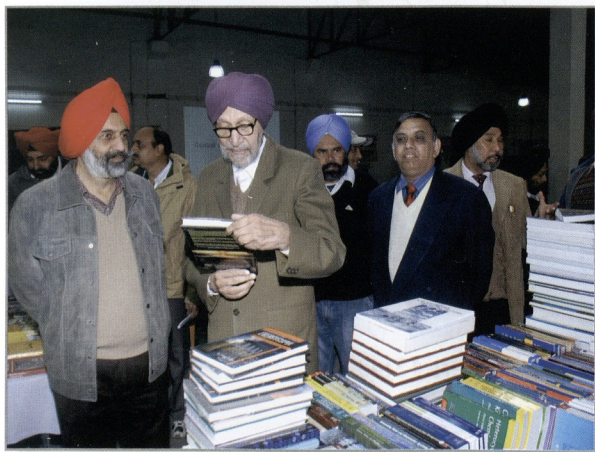
Prof. P. Ramarao participated in the 1st UGC Network Programme on Research Methodologies. March 2010, UIPS, Panjab University, Chandigarh.

## 12.7 Conference/Seminar/Symposium/Workshop Organised

A Joint Indo-German workshop on 'Bioinformatics in Human Genetics: Mutations, Microarray Analysis and Ontologies' was organized in association with Institute for Medical Genetics & Human Genetics, Charité-University of Medicine, Berlin, Germany and Guru Nanak Dev University, Amritsar, January 25 -29, 2010.

## 12.8 Book Exhibition

A two-day book exhibition was organized by the university at its City Campus on 22-23 January, 2010. The exhibition was inaugurated by Gian Peeth awardee Professor Gurdial Singh, who is one of the most celebrated and honoured Punjabi writer. More than 20 leading publishing houses and book suppliers from across the country participated in the exhibition. Nearly 20,000 books covering almost every discipline of education were displayed. Many eminent scholars and renowned educationists visited the exhibition and assisted in selecting the books for the university library.



Prof. Gurdial Singh at Book Exhibition



Display of Books at Book Exhibition,

## 13 Other Activities

### 13.1 Tree Plantation Drive

The site of City Campus, when taken over on lease was a sight of barren grounds with wild growth and absence of any greenery. Therefore, a tree plantation drive was undertaken at the City Campus on July 16, 2009 with the help of Indo-Tibetan Border Police and a large number of important trees were planted to give a green and lively look to the City Campus of the university. Nearly 5000 Neem, Drek, Amaltas, Jamun, Grape Fruit, Kinnow, Lemon, Jarkanda, Chakresia, Tun, Kanak Champa and Gulmohar trees were planted. In addition to it, planting of nearly 1500 ornamentals and shrubs was done and about four acres of lawns were raised to beautify the City Campus.



Vice Chancellor launching the Tree Plantation Drive



ITBP lending helping hand in Tree Plantation Drive

### 13.2 Republic Day celebrations

The university celebrated the Republic Day with great zeal and enthusiasm. The Vice Chancellor hoisted the national flag, inspected the guard of honour and addressed the gathering to remind the audience of the importance of this day. Tea and snacks were served and sweets were distributed after patriotic songs by children.



Republic Day Celebrations, January 26, 2010



### 13.3 Annual Day Celebrations

The Central University of Punjab celebrated its first Annual Day on February 27, 2009. The Vice Chancellor addressed the audience and shared his experiences on establishing a new university. The achievements of the university were highlighted. The Vice Chancellor also shared the problems faced by him during the last one year. The event was followed by a lunch to the staff.

### 13.4 Important Visitors

Hon'ble Chief Minister of Punjab, Sardar Parkash Singh Badal visited the university repeatedly to know the developments at City Campus. In addition, the senior professors of the neighbouring universities and other institutions were also invited for advice.



Hon'ble Chief Minister, Punjab  
with Vice Chancellor  
during his visits to City Campus



Faculty from Guru Nanak Dev University, Amritsar,  
visiting the City Campus



## 14. Abstract of the Financial Statements

### RECEIPTS AND PAYMENTS FOR THE YEAR ENDING 31.03.2010

| RECEIPTS (RUPEES)                | CURRENT YEAR        | PAYMENTS (RUPEES)   | CURRENT YEAR        |
|----------------------------------|---------------------|---|---------------------|
| I. Opening balances              |                     | I. Opening balances                                       | 0                   |
| a) Cash in hand                  | 3,002               | II. Expenses  |                     |
| b) Bank balances                 |                     | a) Establishment Expenses                                 | 47,77,061.82        |
| i. PNB Saving Account            | 1,48,79,314         | b) Administrative Expenses                                | 1,23,19,288.1       |
| II. Grants received              |                     | III. Payments made against funds for various projects     | 0                   |
| a) From UGC                      | 15,00,00,000        | IV. Investments and deposits made                         |                     |
| III. Income on investments from  |                     | a) Out of Earmarked/Endowment funds                       | 0                   |
| a) Earmarked/Endowment Funds     | 0                   | b) Out of Own Funds (Investment-Others)                   | 0                   |
| b) Own Funds (Other investment)  | 0                   | c) in Fixed Deposits                                      | 0                   |
| IV. Interest received            |                     | V. Expenditure on Fixed Assets & Capital Work-in-progress |                     |
| a) On Saving Account             | 37,80,047           | a) Purchase of Fixed Assets                               | 3,18,61,299.62      |
| V. Other income                  |                     | b) Advances   | 4,76,22,228         |
| a) Tender Fee                    | 3,500               | VI. Refund of surplus money/Loans                         | 0                   |
| b) Public Aid                    | 5,00,827            | a) To the Government of India                             |                     |
| c) Job/Admission Application Fee | 4,92,589            | b) To the State Government                                |                     |
| VI. Amount borrowed              | 0                   | c) To other providers of funds                            |                     |
| VII. Any other receipts          |                     | VII. Finance charges                                      | 895                 |
| Security Deposit                 | 8,77,000            | VIII. Other payments                                      |                     |
|                                  |                     | Security Deposit  | 4,64,830            |
|                                  |                     | IX. Closing balances                                      |                     |
|                                  |                     | a) Cash in hand   | 0                   |
|                                  |                     | b) Bank balances  |                     |
|                                  |                     | c) PNB Saving Account                                     | 7,34,90,676.46      |
| <b>TOTAL</b>                     | <b>17,05,36,279</b> | <b>TOTAL</b>  | <b>17,05,36,279</b> |

# *The City Campus in the Making*



Administrative Block



Entrance to Administrative and Academic Block



Library ▶

Transit Accomodation ▼



Greening of the City Campus



Lawns in Development



## Central University of Punjab

City Campus, Mansa Road, Bathinda -151 001

Ph. 0164-2430586 e-mail: [cu.punjab.info@gmail.com](mailto:cu.punjab.info@gmail.com)

[www.centralunipunjab.com](http://www.centralunipunjab.com)